



- TASTE THE DIFFERENCE -

## MODEL GEN-5400

This extreme-volume 2-flavor soft serve freezer is perfect for serving lots of product in a short amount of time! Features the GEN-5400 Genesis Series™ with the Virtual Quality Management System™ to streamline your business. Includes a front-loading refrigerated cabinet with a high speed pump. Our pressurized machines consistently produce smooth and creamy high and low fat products like ice cream, custard, yogurt and sorbets. Excellent for full-menu ice cream and custard stores, sports arenas & stadiums.

### The Electro Freeze Advantage

- **Virtual Quality Management System™** monitors Temperature and Consistency to provide superior taste and quality.
- **Patented Mix Transfer System\*** simplest and most reliable pressurized system available.
- **Flexible Mix Holding System Pumps** directly from bags or from mix containers
- **Innovative Solutions** providing the Best product quality in the industry.
- **Meets ADA Specifications** for self service applications
- **Multi-function LED** display with manager smart tools.
- **The Finest Frozen Product**, consistently the best frozen product available. Smooth, creamy and profitable.
- **Self Closing Spigots** prevents the mess and eliminates waste
- **Exclusive Auger Design** Superior low temperature refrigeration system provides the best in class production and product quality.
- **Energy Conservation Mode** reduces energy cost and holds product safely during non-business hours
- **Superior Low Temperature Refrigeration System** provides the best in class production and product quality
- **Scroll Compressor Technology** provides increased capacity, reliability and efficiency.

## SOFT SERVE FREEZER GENESIS SERIES™

2 Flavor Twist

featuring



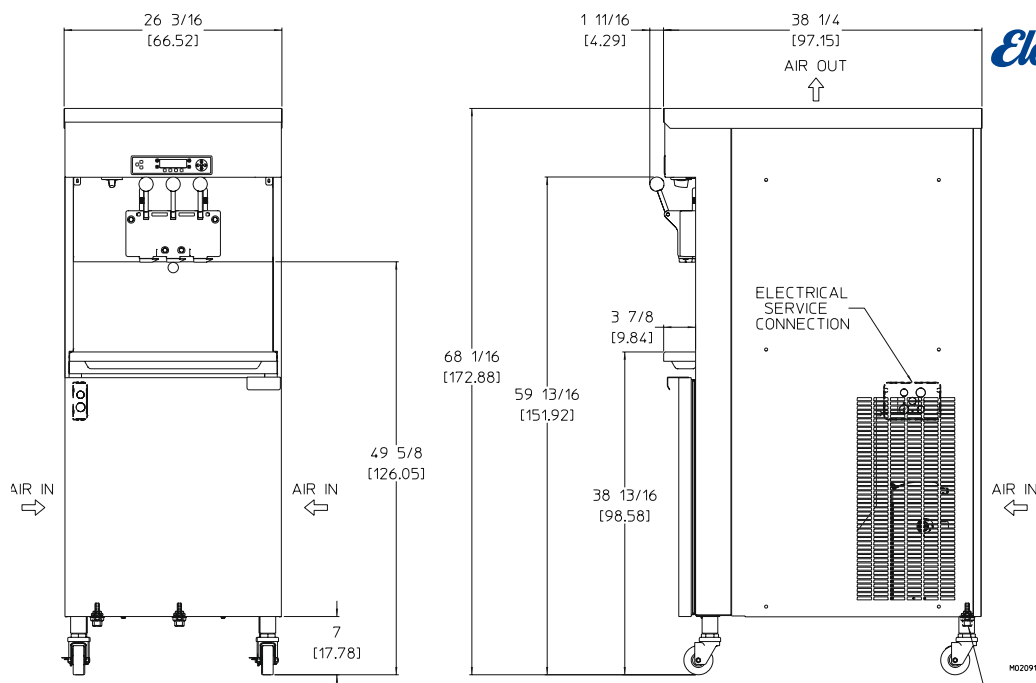
**VQM™**

**Virtual Quality  
Management System™**



**Let VQM help manage your frozen  
dessert business more effectively.**

# GEN-5400 Soft Serve Freezer



## MODEL GEN-5400 SPECIFICATIONS

Due to continual product improvements all specifications are subject to change without notice.

Weights	lbs.	kgs.
Net	914	414
Crated	1015	460
	cu.ft.	cu.m.
Volume	58.42	1.65
Dimensions	in.	cm
Width	26-3/16	66.52
Depth	38-1/4	97.15
Height	68-1/16	172.88

Electrical	Maximum Fuse Size	Minimum Ampacity	Circuit (Qty)	NEMA Plug Type
208-230/60/1 Air	35 (2)	29 (2)		2P, 2W
208-230/60/1 Water	35 (2)	27.5 (2)		2P, 2W
208-230/60/3 Air	25 (2)	20 (2)		3P, 3W
208-230/60/3 Water	25 (2)	19 (2)		3P, 3W

Electrical characteristics other than above available on request from factory or local distributor. Check nameplate for exact electrical data.

### Bidding Spec

Electrical: Volt \_\_\_\_\_ Hz \_\_\_\_\_ Ph \_\_\_\_\_

Cooling: \_\_\_\_\_ Neutral \_\_\_\_\_ Yes \_\_\_\_\_ No

Options: \_\_\_\_\_

\_\_\_\_\_

\_\_\_\_\_

### Electrical

A dedicated electrical connection is required. Manufactured to be permanently connected. See electrical chart for the proper requirement. Consult your local electrical codes for cord and receptacle specifications.

### Beater Motor

Two, 2hp.

### Refrigeration Systems

Two, 19,000 Btuh. R404a.  
Separate Cabinet Refrigeration, One, 1200 Btuh, R134a.  
Btuh may vary depending on compressor used.

### Air Cooled

For proper air circulation, unit requires 6" (15.2 cm) air space at rear panel or at both side panels and 24" (61 cm) air space above unit.

**Mix Hopper Capacity:** two - 24 quarts (22.2 liters) each

**Freezing Cylinder Capacity:** two - 5 quarts (4.7 liters) each

Certified and/or listed by:



\*UL listed and listed by Underwriters Laboratories under Canadian National Standard C22.2 No. 120-13



### Electro Freeze div. of H.C. Duke & Son, LLC

2116-8th Avenue, East Moline, Illinois 61244 USA  
Phone (309) 755-4553 • (800) 755-4545  
FAX (309) 755-9858  
E-mail: sales@electrofreeze.com • www.electrofreeze.com

### Authorized Distributor